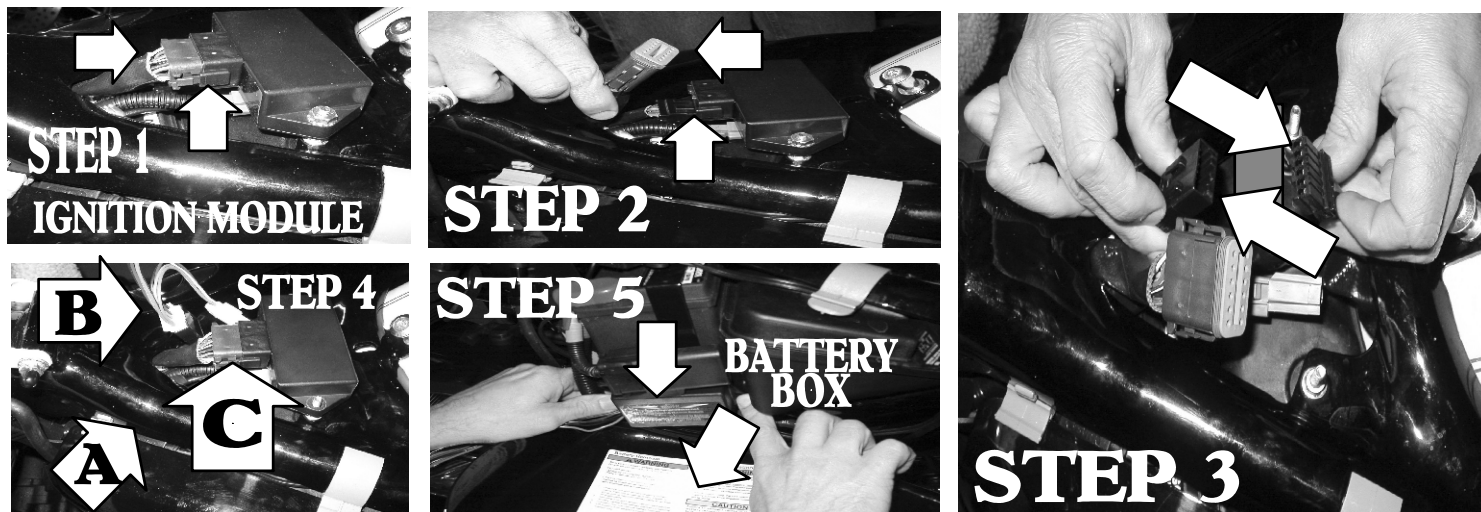


THE "LLUMINATOR" RUN, BRAKE & TURN MODULE TECH SHEET PLUG IN STYLE FOR SECURITY SYSTEM BIKES AND NON SECURITY 2004 TO PRESENT SPORTSTERS



IT IS NOT NECESSARY TO DISCONNECT YOUR BATTERY. IF YOU DO, THE REPROGRAMMING PROCEDURE IS ON THE BACK FOR TSSM MODELS THRU 2006. ON 2007 & UP. REPROGRAMMING IS NOT NECESSARY.

STEP # 1 REMOVE THE SEAT AND LOCATE THE CONNECTOR ON THE IGNITION MODULE.

STEP # 2 ON CARBURETED MODELS DISCONNECT THE PLUG FROM THE IGNITION MODULE .
ON FUEL INJECTED MODELS YOU WILL NOT NEED TO UNPLUG THE ECM !

STEP # 3 DISCONNECT THE FLAT 8 PIN PLUGS UNDERNEATH THE IGNITION MODULE.
ON FUEL INJECTED BIKES, DIG OUT THE PLUGS UNDER THE MAIN WIRE HARNESS !

STEP # 4 RUN THE PLUGS FROM OUR MODULE UNDER THE FRAME (A) CONNECT THE MODULE PLUGS TO THE OEM PLUGS (B). IF YOU HAVE A H-D CONTROL MODULE, BE SURE YOU PLUG OUR MODULE INTO THE MAIN HARNESS, THEN THE H-D CONTROLLER INTO OUR PLUGS. PLUG THE IGNITION MODULE BACK TOGETHER, MAKE SURE YOU HEAR IT CLICK ! (C).

STEP # 5 NEATLY SECURE THE WIRE GROUPING AND MAKE SURE THAT YOUR WIRES WILL NOT BE PINCHED OR CHAFED, SECURE THE MODULE. THE MODULE CAN BE MOUNTED AT THE LOWER FRONT PORTION OF THE BATTERY BOX SIDE COVER IF YOUR BIKE IS A NON SECURITY BIKE, THAT'S IT, YOU'RE DONE !

ALARM BIKES : MAKE SURE IT FUNCTIONS CORRECTLY, CHECK IT OUT ON ACCESSORY POSITION TOO !

SHOULD YOU HAVE ALARM ISSUES, YOU HAVE 2 OPTIONS:

OPTION 1, LOCATE THE BROWN WIRE WITH A GRAY STRIPE. USE YOUR TEST LIGHT TO DETERMINE THAT THIS WIRE HAS POWER WITH THE KEY OFF. THIS WIRE IS CONNECTED TO THE TSSM (TURN SIGNAL / SECURITY MODULE) , OR THE WIRE CAN ALSO BE ACCESSED ON THE "BATTERY" FUSE AT THE FUSE PANEL. REMOVE OUR ORANGE WIRE FROM THE PLUG, ON THE MODULE SIDE. SCOTCH LOCK THE ORANGE WIRE FROM OUR MODULE TO THE BROWN WIRE WITH GRAY STRIPE.

OPTION 2, YOU CAN PICK UP AN INLINE 7 1/2 AMP FUSE AT YOUR LOCAL AUTO PARTS STORE, REMOVE THE ORANGE WIRE (AS ABOVE), CONNECT IN THE INLINE FUSE AND GO RIGHT TO THE POSITIVE POST ON YOUR BATTERY SIDE.

TSSM



BROWN W/ GRAY STRIPE